

**MILO**  
...OF CLIMBING

# 2018 COLLECTION

for every moment  
of your mountain life







## CONTENT

<b>INSULATED JACKETS</b>	4-5
<b>MOUNTAINEERING JACKETS</b>	5
<b>WATERPROOF JACKETS</b>	5
<b>WATERPROOF PANTS</b>	6
<b>SKI TOURING PANTS</b>	6
<b>SOFTSHELL JACKETS</b>	7
<b>HYBRID JACKETS</b>	8
<b>WINDPROOF JACKETS</b>	8-9
<b>THERMOACTIVE JACKETS</b>	9
<b>EXTENDO JACKETS</b>	10
<b>EXTENDO PANTS</b>	10-14
<b>POLARTEC PANTS</b>	15
<b>POLARTEC JACKETS</b>	15
<b>LONGSLEEVE</b>	16
<b>RUNNING T-SHIRTS</b>	16-17
<b>FLEECE JACKETS</b>	19-21
<b>SUPPLEX PANTS</b>	22-23
<b>UNDERWEAR</b>	24
<b>CLIMBING JACKETS</b>	26-27
<b>CLIMBING PANTS</b>	28-31
<b>CLIMBING T-SHIRTS</b>	32-33
<b>CLIMBING ACCESSORIES</b>	34
<b>BACKPACKS</b>	35-37
<b>TRAVELLING ACCESSORIES</b>	38
<b>SOCKS</b>	39
<b>GLOVES</b>	40
<b>CAPS</b>	40
<b>BIVOUAC ACCESSORIES</b>	41
<b>TREKKING ACCESSORIES</b>	42
<b>FABRICS</b>	43



1. GOSHA cherry tomato
2. CHITE LADY blue nights
3. BATURA black
4. DEVE amparo blue
5. CREEK black
6. GARRE
7. MANALI amparo blue
8. MARREE cherry tomato
9. TOLGA black
10. CHITE tomato red
11. ATERO blue nights
12. ANAS PANTS black





## MANALI

**SIZES** S-XXL  
**COLORS**  amparo blue, periscope grey

Technical cut and functionality turns Manali into a great all around jacket for ski touring, winter mountain trips or cold evenings in rocks.

### Key features:


- extended neoprene thumb hole cuffs;
- insulated, adjustable hood;
- special down chamber construction
- can be hidden in inner chest pocket.



Fabric: 100% Polyamide  
Filling: duck down90/10  
(500cuin/235g)



## MANALI LADY

**SIZES** S-XXL  
**COLORS**  amparo blue, periscope grey

This jacket has all the features of men's style, but designed in ladies' specific cut. Key features:

### Key features:

- neoprene thumb hole cuffs;
- insulated, adjustable hood;
- special down chamber construction



Fabric: 100% Polyamide  
Filling: duck down90/10  
(500cuin/235g)



## MAHO

**SIZES** S-XXL  
**COLORS**  amparo blue, periscope grey

Maho jackets are the perfect solution for people looking for versatile insulationjacket,providing thermal comfort regardless of the weather conditions: Primaloft® insulation ensures light weight, breathability and works even when wet. Maho jackets have a technical cut which allows maximum movement freedom and are available for both men and ladies.

- Primaloft® Sport insulation • close technical cut • packable into inner pocket • high placed pockets
- integrated insulated hood



Fabric: 100% Polamide  
Filling: Primaloft® Sport  
100 / 60





## MAHO LADY

### SIZES

S-XXL

### COLORS



amparo blue, periscope grey

Female version of Maho featuring all the male style characteristics in ladies' specific cut.

- *Primaloft® Sport insulation* • *close technical cut* • *packable into inner pocket* • *high placed pockets* • *integrated insulated hood*



Fabric: 100% Polamide  
Filling: Primaloft® Sport  
100 / 60

## GOSHA

### SIZES

S-XXL

### COLORS



cherry tomato, periscope grey

The lightest and most breathable hardshell jacket ever made by Milo. 3-layer Gelanots® fabric combines high water resistance with enormously high vapour transfer: Gosha jacket will keep You dry either when it's raining or You're sweating during physical activities and its technical cut allows maximum freedom of movement.

- *fully adjustable hood* • *adjustable cuffs and bottom hem* • *pockets accessible when wearing a backpack* • *technical stable cut for maximum movement freedom* • *underarm ventilation* • *fully taped*



Fabric: Gelanots® 3U  
(20000mm/H2O, 56000g/m2/24h)

## RUN RUN

### SIZES

S-XXL

### COLORS



amparo blue, periscope grey

Extremely light wind breaker with a close cut and many running features, like elastic thumbholes or snap button which keeps jacket in place even with opened zip. It can be also packed inside chest pocket and carried in any hip bag.

- Key features:*
- *light weight;*
  - *minimum packing volume;*
  - *close cut, special running features.*



Fabric: 100% Polamide  
Gelanots





## LUKKA GTX / LUKKA LADY

**SIZES** XS-XXXL  
**COLORS** ● black

Robust waterproof pants equipped with Aquatex membrane for winter trekking in all demanding conditions.

- reinforced knees & inner leg
- full length, covered side zips
- removable snow gaiters
- detachable suspenders



Fabric: Aquatex 2  
(10000mmH2O/10000g/  
m2/24h)



## OLIN PRO/ OLIN LADY

**SIZES** XS-XXXL  
**COLORS** ● black

Simple waterproof pants for longer mountain trips in unpredictable weather conditions. Can be used also in winter when worn over a thermal or fleece pants.

- shaped knees
- 1/3 length covered side zips
- detachable suspenders



Fabric: Aquatex 2  
(10000mmH2O/10000g/  
m2/24h)



## LAHORE/ LAHORE LADY

**SIZES** S-XXL  
**COLORS** ● black

Designed after long time testing off the slopes. Also a perfect choice for active ladies who look for technical pants, which offer breathability and wind protection.

- reinforced knees, back and hem
- long hem zips
- ventilated legs
- adjustable waist



Fabric: Extendo WN



## TOKO/ TOKO LADY

**SIZES** S-XXL  
**COLORS** ● black

Technical trekking pants for autumn and winter use made of warm Extendo fabric. Improved reinforcements come as thick ripstop fabric with warm inner feeling. Equipped with integrated waist adjustment, 2 front pockets, 2 back pockets and 1 cargo pocket: all zipped. Available for men and ladies.



Fabric: Extendo WN





## CHILL

### SIZES

S-XXL

**COLORS** ● ●

mirabelle, black

Refreshed Chill jacket is still a light, comfortable and wind resistant jacket for every day use. It can be used as a companion for trekking trips in spring or autumn or simply for chilly days in the city.



- *profiled knees*
- *reinforced knees, back and hem*
- *hem zips*
- *5 zipped pockets*

Fabric: Softshell 2



## CHILL LADY

### SIZES

S-XXL

**COLORS** ● ●

mirabelle, black

Refreshed Chill jacket is still a light, comfortable and wind resistant jacket for every day use. It can be used as a companion for trekking trips in spring or autumn or simply for chilly days in the city.



- *wind resistant*
- *comfortable cut*
- *adjustable cuffs*
- *3 pokes*

Fabric: Softshell 2



## MITTU

### SIZES

S-XXL

**COLORS** ● ●

ocean blue, black

3-layer softshell jacket designed for all weather protection. The outer shell is wind resistant and supports the inner Aquatex membrane. The inner layer is made of thin fleece to optimize thermal comfort. The jacket is also equipped with waterproof hood and under arm ventilation for more intensive activities

- *comfortable cut*
- *waterproof hood hidden in the collar*
- *underarm ventilation*
- *3 pokes*



Fabric: Softshell 3



## MITTU LADY

### SIZES

S-XXL

**COLORS** ● ●

ocean blue, black

All weather softshell jacket designed specially for ladies. Helps to fight with lower temperature, wind and rain thank to Aquatex membrane and waterproof hood hidden in the collar. If ventilation is required, it can be easily provided by opening the under arm zips.



- *comfortable cut*
- *waterproof hood hidden in the collar*
- *underarm ventilation*
- *3 pokes*

Fabric: Softshell 3





## DEVE

### SIZES

S-XXL

### COLORS



amparo blue / yellow / dark grey  
periscope grey / amparo blue / sunny beige

Highly technical hybrid fleece jacket. technical cut. Two layer body (fleece and windproof layer of 100% Pa) assures thermal comfort even in winter conditions.

- hybrid construction
- integrated hood
- adjustable hem



Fabric: Nanoqpile 200  
Nanoqpile Stretch,



## DEVE LADY

### SIZES

S-XXL

### COLORS



amparo blue / yellow / dark grey  
periscope grey / amparo blue / sunny beige

Hybrid fleece jacket. designed for ladies (fleece and windproof layer of 100% Pa) assures thermal comfort even in winter conditions.

- hybrid construction
- integrated hood
- adjustable hem



Fabric: Nanoqpile 200  
Nanoqpile Stretch,



## YUKO

### SIZES

S-XXL

### COLORS



blue nights/dark grey  
black

Light Nanoqpile jacket with wind protecting membrane, integrated hood and elastic side panels for improved comfort and great look.

#### Key features:

- elastic panels;
- integrated hood;
- adjustable hem,
- windproof,
- 4 pockets.



Fabric: Nanoqpile WP





## YUKO LADY

**SIZES**

**COLORS** ● ●

S-XXL

blue nights/dark grey

Wind protecting Nanoqpile jacket with integrated hood and elastic side panels in ladies' contoured cut.

*Key features:*

- elastic panels;
- integrated hood;
- adjustable hem,
- windproof, • 4 pockets.



Fabric: Nanoqpile WP



## CHITE

**SIZES**

**COLORS** ● ●

S-XXL

tomato red, blue nights

Light Nanoqpile sweater with integrated hood, elastic panels for improved fit and great look. Helps to keep thermal comfort during sport activities in spring and autumn.

*Key features:* • thumb hole cuffs; • elastic panels; • integrated hood; • adjustable hem.



Fabric: Nanoqpile 1



## CHITE LADY

**SIZES**

**COLORS** ● ●

S-XXL

tomato red, blue nights

Nanoqpile sweater for ladies with integrated hood, elastic panels for improved fit and great look. Helps to keep thermal comfort during sport activities in spring and autumn.

*Key features:* • thumb hole cuffs; • elastic panels; • integrated hood; • adjustable hem.



Fabric: Nanoqpile 1





## REZYO

**SIZES**

**COLORS** ● ●

Technical jacket made of Extendo fabric reinforced with robust patches. Perfect companion for advanced trekkings when function needs to meet comfort.

- *integrated, adjustable hood*
- *2 main pockets*
- *elastic, high quality fabric*
- *adjustable hem*

**S-XXL**

blue nights,black



Fabric: Extendo LT



## ATERO

**SIZES**

**COLORS** ● ●

Extendo pants combining light weight, comfort and durability thank to multiple robust reinforcements. Equipped with 5 zipped pockets, adjustable and zipped hem for wearing over high trekking boots.

- *robust, reinforced fabric*
- *5 zipped pockets, integrated belt*

**S-XXL**

blue nights,black



Fabric: Extendo LT





## ATERO LADY

SIZES

COLORS



S-XXL

blue nights,black

Female version of Atero featuring all the male style characteristics in ladies' specific cut.

- robust, reinforced fabric
- 5 zipped pockets, integrated belt



Fabric: Extendo LT



## GABRO

SIZES

COLORS



S-XXL

cherry tomato, periscope gray

Functional Extendo pants made of newest fabric evolution with robust reinforcements and advanced technical solutions

- robust, reinforced fabric • 4 zipped pockets • 1 cargo pocket in the back • adjustable hem



Fabric: Extendo LT



## GABRO LADY

SIZES

COLORS



S-XXL

cherry tomato, periscope gray

Trekking pants for ladies combining light weight with comfort and technical features of men's style.

- robust, reinforced fabric • 4 zipped pockets • 1 cargo pocket in the back • adjustable hem



Fabric: Extendo LT





## MARRE

**SIZES** S-XXL  
**COLORS** ● ● cherry tomato, black

If the temperatures are rising higher than expected, these light weight trekking pants can be turned easily into shorts. Zipped off legs will not take too much space in the backpack thank to thin Extendo fabric.

- zip off legs • reinforced hem • adjustable hem • 4 pockets • additional belt



Fabric: Extendo LT



## RENG0

**SIZES** S-XXL  
**COLORS** ● ● cherry tomato, periscope gray

Comfortable light weight shorts made of Extendo designed for discovering beautiful summer trails at any desired speed thank to their running suitable cut. Available for men and for ladies.

- light weight and elastic • quick drying • zipped pockets



Fabric: Extendo LT



## RENG0 LADY

**SIZES** S-XXL  
**COLORS** ● ● cherry tomato, periscope gray

Female version of Rengo shorts in typical running cut.

- light weight and elastic • quick drying • zipped pockets



Fabric: Extendo LT



## JUULY

**SIZES** S-XXL  
**COLORS** ● ● light gray, black

Extendo pants combining light weight, comfort and durability thank to multiple robust reinforcements. Equipped with 5 zipped pockets, adjustable and zipped hem for wearing over high trekking boots.

- robust, reinforced fabric • 5 zipped pockets, integrated belt



Fabric: Extendo LT





## JUULY LADY

**SIZES**

**COLORS**



S-XXL  
light gray, black

Light, comfortable trekking pants in ladies specific cut.

- robust, reinforced fabric •
- 4 zipped pockets • 1 cargo pocket in the back • adjustable hem



Fabric: Extendo LT



## BRENTA

**SIZES**

**COLORS**



XS-XXL  
blue nights, black, gray, tomato red,

Pants chosen by thousands of outdoor enthusiasts. Secured with ripstop reinforcements for any kind of climbing and trekking usage

- Key features:*
- abrasion resistant reinforcements • hem zips
  - 4 zipped pockets • additional belt



Fabric: Extendo



## TACUL

**SIZES**

**COLORS**



XS-XXL  
blue nights, black, gray, tomato red,

Perfect pants for everyone who wants to enjoy the great outdoors in style. Reinforced knees and lower legs help to keep the pants in good shape.

- ripstop reinforcements • adjustable hem • quick drying • 4 pockets
- additional belt




Fabric: Extendo





## TACUL LADY

**SIZES** XS-XXL  
**COLORS**  blue nights, black, gray, tomato red,

Advanced trekking pants in ladies' specific cut made of 4 way stretch Extendo fabric guaranteeing perfect fit. With features like ripstop pads on knees and ankle sections or additional, zipped pockets, these pants will be a great companion even on tough trails.

- ripstop reinforcements
- adjustable hem
- quick drying
- 4 pockets
- additional belt



Fabric: Extendo



## VINO

**SIZES** XS-XXL  
**COLORS**  blue nights, black, gray, tomato red,

Comfortable and durable trekking pants with straight cut which will also go along with everyday activities. Key features:

- straight, comfortable cut;
- elastic fabric;
- quick drying;
- light weight;
- 5 pockets;
- additional belt.



Fabric: Extendo



## VINO LADY

**SIZES** XS-XXL  
**COLORS**  blue nights, black, gray, tomato red,

Perfect pants for everyone who wants to enjoy the great outdoors in style. Reinforced knees and lower legs help to keep the pants in good shape.

- Key features:
- ripstop reinforcements
  - adjustable hem
  - quick drying
  - 4 pockets
  - additional belt



Fabric: Extendo







## ANAS PANTS

**SIZES**

XS-XXXL

**COLORS**



tomato red, black,

Comfortable Polartec pants recommended for climbing, running or cycling in chilly conditions.

*Key features:*

- profiled and reinforced knees
- elastic waist;
- 2 zipped pockets.



Fabric: Polartec 100 Micro



## ANAS

**SIZES**

S-XXL

**COLORS**



tomato red, black,

Thin and light Polartec 100 Micro jumper guarantees good thermal protection during intensive sport activities. Additional, full length side panels made of stretch fleece ensure great movement freedom. The jumper can be also used as a second layer of clothing.

- efficiently breathables
- stretch side panels
- adjustable hem
- 3 pockets



Fabric: Polartec 100 Micro



## ANAS LADY

**SIZES**

S-XXL

**COLORS**



tomato red, black,

Nicely cut ladies' jumper made of Polartec 100 Micro. Great for any sport activities thank to full length side panels made of warm, stretch fleece. Also perfect as a light and stylish second layer of clothing.

- efficiently breathables
- stretch side panels
- adjustable hem
- 3 pockets



Fabric: Polartec 100 Micro





## ASKLEV

**SIZES**

**COLORS**



S-XXL

red/blue, blue/red, black/  
olive green

Stylish hooded t-shirt for summer evenings in 3 color combinations. Comfortable thanks to cotton with an addition of elastic yarn.



Fabric: Cotton Strech



## TLELL

**SIZES**

**COLORS**



S-XXL

blue/neon yellow, ocean blue/  
orange

Functional performance t-shirts designed for trail running. Made of light weight Eclipse fabric which keeps Your skin dry with additional stretch panels for maximum comfort. Equipped with small zipped key pocket.



Fabric: Eclipse



## TLELL LADY

**SIZES**

**COLORS**



S-XXL

blue/light blue, ocean blue/  
burgundy

Female version of Tlell featuring all the male style characteristics in ladies' specific cut.



Fabric: Eclipse





## TOLGA

**SIZES**

S-XXL

**COLORS**



orange/ocean blue,  
ocean blue, black/ocean blue

Basic technical t-shirt  
made of Eclipse: a wicking  
fabric which combines  
light weight, moisture  
transportation and quick  
drying.



Fabric: Eclipse





1. HEYOO sunny beige
2. UNDERSHIRT
3. KALAR
4. CORTE LADY sand
5. YRGYZ blue nights
6. ATERO blue nights
7. BHUG dust brown
8. OCUS neon yellow
9. TOLGA ocean blue/light gray
10. WALLY bijou blue
11. SAFI neon yellow







## CORTE

### SIZES

### COLORS



S-XXL

sand/dark grey,  
blue nights/dark grey

Fleece doesn't have to look like fleece, especially if it works like fleece. This combination of style with functionality made of medium weight Nanoqpile fabrics proves it. Available for modern men and ladies.

- integrated hood
- extended back
- additional arm pocket
- adjustable bottom hem



Fabric: Nanoqpile 2

## CORTE LADY

### SIZES

### COLORS



S-XXL

sand/dark grey,  
blue nights/dark grey

Female version of Corte featuring all the men style characteristics in ladies' specific cut.

- integrated hood
- extended back
- additional arm pocket
- adjustable bottom hem



Fabric: Nanoqpile 2

## YRGYZ

### SIZES

### COLORS



S-XXL

amparo blue, yellow apple

Medium weight fleece designed to keep You warm and draw attention of Your comrades. Textured Nanoqpile fabric is responsible for the first feature and the stylish retro design for the second. For men and ladies.

- comfortable cut
- 2 main pockets
- 1 chest pockets
- adjustable hem



Fabric: Nanoqpile 2



## SIZES

## COLORS



S-XXL  
amparo blue, yellow apple

A blue and grey quilted ski jacket with a high collar, full-length zipper, and multiple pockets. The jacket features a mix of blue and grey quilted panels. It has a high stand-up collar, a full-length front zipper, and several pockets, including a large chest pocket and two side pockets. The sleeves have grey quilted patches on the elbows. A small circular logo is visible on the lower left side of the front panel.

• comfortable cut • 2 main pockets • 1 chest pockets • adjustable hem

Fabric: Nanoqpile 2







## INCO

**SIZES**

**COLORS** ●

S-XXL  
gray melange

Basic, medium weight fleece jacket, perfect as a second layer of clothing to wear under a waterproof hardshell. Equipped with 2 pockets and designed to stay close to the body.

- *efficient thermal protection*
- *comfortable, close cut*
- *hardshell compatible*
- *adjustable hem*

Fabric: Nanoqpile  
200 Classic



## INCO LADY

**SIZES**

**COLORS** ●

S-XXL  
gray melange

Basic, second layer fleece jacket, designed in nice, tailored cut. It stays close to the body which optimizes thermal protection when worn under a hardshell.

- *efficient thermal protection*
- *comfortable, close cut*
- *hardshell compatible*
- *adjustable hem*

Fabric: Nanoqpile  
200 Classic



## HEYOO

**SIZES**

**COLORS** ● ●

S-XXL  
sunny beige,  
dark gray

Closely cut running jumper with full length zip, made of Nanoqpile Stretch fleece. Thumb holes help to keep the jacket in the right position and small hood with elastic finishing doesn't disturb. Perfect solution for intensive activities in chilly conditions.

- *elastic fleece fabric*
- *full length zip*
- *flat arm pockets*
- *thumbhole*



Fabric: Nanoqpile  
Strech





## HEYOO LADY

### SIZES

**COLORS**  

Nicely cut sweater made of fully elastic Nanoqpile fleece designed for intensive activities. Stays in the right place in any situation thanks to elastic hem finishing and thumb holes.

• *elastic fleece fabric* • *full length zip* • *flat arm pockets* • *thumbhole*



Fabric: Nanoqpile  
Strech

S-XXL  
sunny beige,  
dark gray

## HEYOO PANTS

### SIZES

**COLORS**  

Comfortable unisex pants matching Heyoo jackets.

• *skin friendly, stretch fabric*;  
• *efficiently breathable*;  
• *flatlock stitching*;  
• *elastic waist*.



Fabric: Nanoqpile  
Strech

S-XXL  
sunny beige,  
dark gray



## L'GOTA

### SIZES

**COLORS**  

Classic all-round trekking pants with zipped off legs. Made of Supplex: light, well breathing and quick drying fabric. Equipped with numerous pockets and with adjustable bottom of the leg. Available as men's or ladies' version.

• *profiled knees* • *zipped off legs* • *bottom hem adjustment* • *5 pockets*



Fabric: Supplex

S-XXL  
sand, ash gray



## L'GOTA LADY

### SIZES

**COLORS**  

All-round trekking pants with zipped off legs in ladies' specific cut. Light, breathable and quick drying

• *profiled knees* • *zipped off legs* • *bottom hem adjustment* • *5 pockets*



Fabric: Supplex

S-XXL  
sand, ash gray





## MAPE

### SIZES

### COLORS



S-XXL  
sand, ash gray

If You're sure You don't need shorts and Supplex is Your favourite fabric, Mape pants will suit You just fine. Straight cut and numerous pockets turn them into the trekking classic available for both men and ladies.

- *profiled knees* • *bottom hem adjustment* • *5 pockets*



Fabric: Supplex

## MAPE LADY

### SIZES

### COLORS



S-XXL  
sand, ash gray

Female version of Mape featuring all the men style characteristics in ladies' specific cut.

- *profiled knees* • *bottom hem adjustment* • *5 pockets*



Fabric: Supplex

## PATNA

### SIZES

### COLORS



S-XXL  
sand, ash gray

Hot conditions are the natural environment for Patna shorts made of light, breathable and quick drying Supplex fabric. Available in men and ladies cut.

- *½ lenght* • *5 pockets*



Fabric: Supplex

## PATNA LADY

### SIZES

### COLORS



S-XXL  
sand, ash gray

Female version of Patna featuring all the men style characteristics in ladies' specific cut.

- *profiled knees* • *bottom hem adjustment* • *5 pockets*

- *½ lenght* • *5 pockets*



Fabric: Supplex





## BOTO

**SIZES**

S-XXL

**COLORS**



mirabelle/burgundy  
burgundy/mirabelle

Easy wearing long-sleeved hooded shirt made of comfortable Eclipse Stretch fabric designed for warming up or cooling down. With additional zipped pocket.



*Key features:*

- elastic panels;
- integrated hood;
- adjustable hem,
- windproof,
- 4 pockets.

Fabric: Eclipse Stretch



## UNDERSHIRT / UNDERPANTS

**SIZES**

S-XXL

**COLORS**



dark blue/ orange

Seamless long sleeve shirt & pants made of anti-odour fabric which offers fantastic thermal protection and humidity transport.

- seamless technology for more comfort;
- perfect fit



Fabric: 27% Polyamide /  
67% Polypropylene / 3%  
Elastane



## UNDERSHIRT LADY / UNDERPANTS LADY

**SIZES**

S-XXL

**COLORS**



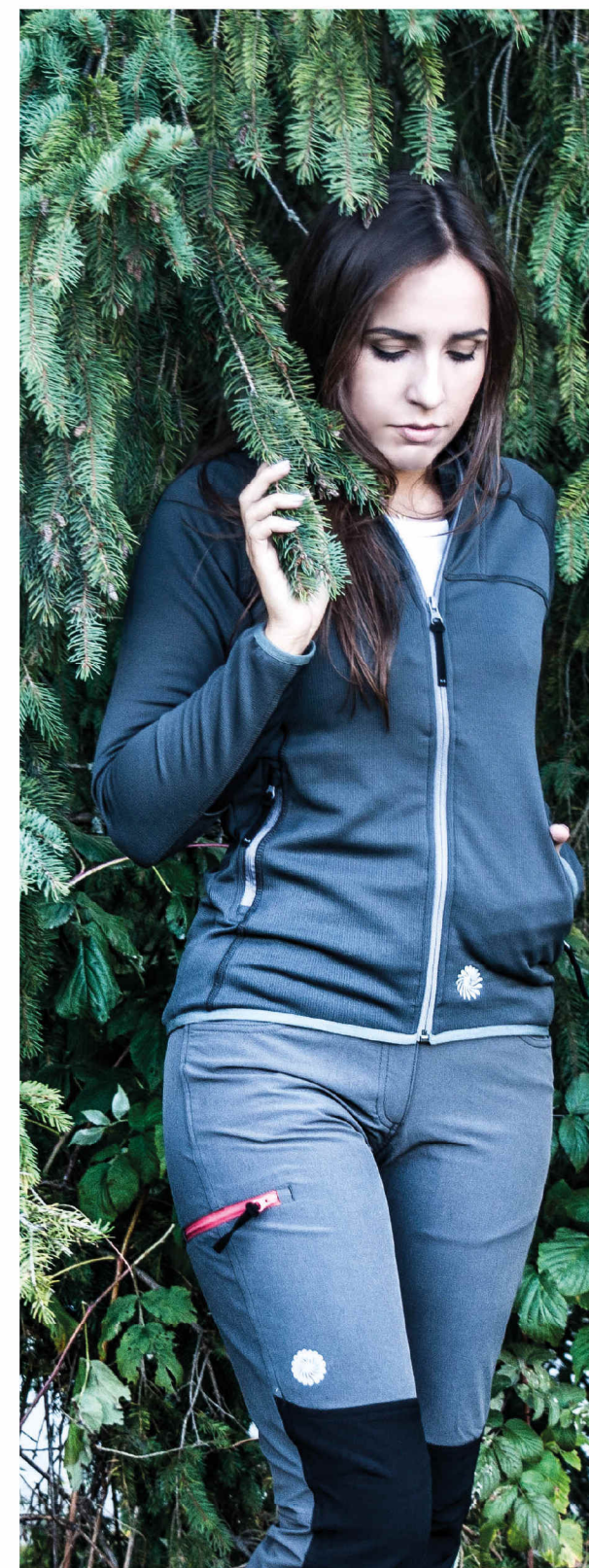
raspberry/ neon pink

Seamless long sleeve shirt & pants made of anti-odour fabric which offers fantastic thermal protection and humidity transport.

- seamless technology for more comfort;
- perfect fit



Fabric: 27% Polyamide /  
67% Polypropylene / 3%  
Elastane





1. TOLGA cherry tomato
2. DIX neon yellow
3. TAAY
4. PATTAYA yellow moss
5. YRGYZ blue nights
6. ZOVEE purple potion, violet
7. TINDE LADY green
8. ATTAI latte brown
9. DIDI periscope gray, blue
10. DIX bijou blue



CLIMBING





## PATTAYA

**SIZES**

**COLORS**



S-XXL

yellow moss, brown

There is so much style in the Pattaya sweatshirt, that it's easy to forget about its initial function: a warming up climbing sweater made of sleek fleece fabric with brushed inner side. Available in men's and ladies' specific cut.

• kangaroo pocket • thumb hole cuffs • integrated hood



Fabric: Nanoqpile 2



## PATTAYA LADY

**SIZES**

**COLORS**



S-XXL

yellow moss, brown

Female version of Pattaya featuring all the men style characteristics in ladies' specific cut.

• kangaroo pocket • thumb hole cuffs • integrated hood



Fabric: Nanoqpile 2



## BHUG

**SIZES**

**COLORS**



S-XXL

dust brown ,blue nights

Light warm up jacket made of thin, structured fleece fabric helping the body to keep its thermal balance. Equipped with movement friendly sleeve construction, thumb holes and small, flat pocket, big enough to carry a mobile phone. Available in men's and ladies' cut.

• fitted hood • additional flat pocket • thumb hole cuffs • flatlock seams



Fabric: Nanoqpile 1





### BHUG LADY

**SIZES**

**COLORS**



S-XXL  
dust brown ,blue nights

Female version of Bhug featuring all the men style characteristics in ladies' specific cut.

• fitted hood • additional flat pocket • thumb hole cuffs • flatlock seams



Fabric: Nanoqpile 1



### TINDE

**SIZES**

**COLORS**



S-XXL  
blue nights, periscope grey

Easy wearing, comfortable hooded long-sleeve shirt for Your rest day made of technical fabric with ethnic pattern. For men and ladies.



### TINDE LADY

**SIZES**

**COLORS**



S-XXL  
pear green, purple potion

Female version of Tinde featuring all the men style characteristics in ladies' specific cut.







## ZOVEE

**SIZES**

S-XXL

**COLORS**



blue nights, black

Pure climbing pants made of natural cotton with an addition of elastic yarn. Comfortable and move friendly with exceptional design combined with climbing features like profiled knees, integrated belt or chalk bag loop.

- natural fabric with elastic yarn
- climbing cut and features
- fresh design
- adjustable hem



Fabric:Cotton Stretch



## ZOVEE LADY

**SIZES**

S-XXL

**COLORS**



purple potion, periscope gray

Exceptional climbing pants created for ladies. Enormously comfortable thank to elastic belt, profiled knees and natural fabric mixed with elastic yarn.

- natural fabric with elastic yarn
- climbing cut and features
- fresh design
- adjustable hem



Fabric:Cotton Stretch



## ZOVEE 3/4

**SIZES**

S-XXL

**COLORS**



yellow moss, periscope gray

3/4 length new climbing pants. Deep pockets and climbing cut provide great comfort. With 2 color pockets and print pants are like no other.

- natural fabric with elastic yarn
- climbing cut and features
- fresh design
- adjustable hem



Fabric:Cotton Stretch





## ZOVEE SHORT

**SIZES**

S-XXL

**COLORS**



blue nights,black

*Remarkable, light shorts for summer use. Made of natural fabric with elastic yarn, equipped with 3 pockets and climbing features.*



- natural fabric with elastic yarn
- climbing cut and features
- fresh design
- elastic in waist

Fabric:Cotton Stretch







## ETNO BRA

**SIZES**

S-XL

**COLORS**



light ethnic pattern,  
dark ethnic pattern

Nice set of performance first layer with ethnic pattern for ladies who prefer not to look that technical. Thin, elastic fabric wraps comfortably the silhouette.



## ETNO TIGHTS

**SIZES**

S-XL

**COLORS**



light ethnic pattern,  
dark ethnic pattern

Nice set of performance first layer with ethnic pattern for ladies who prefer not to look that technical. Thin, elastic fabric wraps comfortably the silhouette.



## AKI

**SIZES**

S-XXL

**COLORS**



bijou blue, blue nights

Comfortable fit and great style are the common features of the Aki pants line. Strong and ultralight nylon fabric makes the pants not only look good but also last for a long time.

- *profiled knees*
- *integrated belt* • *chalk bag loop* • *4 pockets*
- *adjustable hem*



Fabric: 100%  
Polyamid



## AKI LADY

**SIZES**

S-XXL

**COLORS**



bijou blue, blue nights

Ultra light, summer climbing pants for ladies. Strong nylon fabric makes the pants look good and last in good shape for a long time.

- *profiled knees*
- *integrated belt* • *chalk bag loop* • *4 pockets*
- *adjustable hem*




Fabric: 100%  
Polyamid





## AKI 3/4

**SIZES** S-XXL  
**COLORS**   bijou blue, blue nights

Strong, light and short for summer rock climbing.

- *profiled knees*
- *integrated belt* • *chalk bag loop* • *4 pockets*
- *adjustable hem*



Fabric: 100% Polyamid



## NARAZ

**SIZES** S-XXL  
**COLORS**  jeans blue

Stylish and comfortable bouldering jeans which can be also used as everyday trousers for people loving loose fit, easy life and climbing halls.

- *strong cotton jeans fabric*; • *stretchy for more comfort*; • *profiled knees, crotch gusset*;
- *comfortable, elastic waist*; • *4 pockets*.

Fabric: 99% Cotton / 1% Elasthane



## NYE LADY

**SIZES** XS-XXL  
**COLORS**  jeans blue

Unique ladies' climbing jeans with comfortable, elastic waist belt

- *strong cotton jeans fabric*; • *stretchy for more comfort*; • *profiled knees, crotch gusset*;
- *comfortable, elastic waist*; • *4 pockets*.



Fabric: 99% Cotton / 1% Elasthane



## OVISS

**SIZES** S-XXL  
**COLORS**  olive green

Avantgarde pants created as for bouldering as for everyday use. Heavy cotton with an addition of stretch is a classic solution which guarantees great look, good comfort and long lasting form.

- Key features:* • *thick, durable cotton*; • *profiled knees, crotch gusset*;
- *chalk bag and brush loops*.



Fabric: 97% Cotton / 3% Elasthane





## ARE

**SIZES**

S-XXL

**COLORS**



green/ocean blue, grey/black

High performance climbing t-shirt made of Eclipse Bamboo which feels great on the skin and efficiently takes away the humidity thank to addition of natural bamboo fibers.



Fabric: Eclipse Bamboo



## LASHOO LADY

**SIZES**

S-XXL

**COLORS**



yellow apple, dark violet, periscope grey

Stylish climbing top made of skin friendly Eclipse Cotton fabric with unique printed decorations



Fabric: Eclipse Cotton





## LASHOO

### SIZES

**COLORS** ● ● ●

Climbing shirts made of Eclipse Cotton which is a stylish mixture of performance yarns with the classic nice touch of cotton. Feels light and natural.



Fabric: Eclipse Cotton

S-XXL

yellow apple, dark violet,  
periscope grey



## DIDI LADY

### SIZES

**COLORS** ● ●

Attractive climbing tank top for ladies made of breathable and elastic fabric.

*Key features:* •technical cut  
•elastic and breathable fabric  
•light weight



Fabric: Eclipse Stretch

S-XXL

blue / grey, charcoal / blue

CLIMBING



## ATTAI

**COLORS** ● ●

blue nights/ tomato red,  
latte brown/ blue nights

Small chalk bag with string closure, brush loop and hairy inner lining.



## BRIONE

**COLORS**

patchwork

Big bouldering chalk bag with stable base, handle and pocket.

CLIMBING ACCESSORIES





## VENTIE

**COLORS** ● ● bijou blue, neon yellow

Durable rope bag in a typical messenger style. Equipped with a detachable, square rope sheet, comfortable shoulder strap, top closure with buckle and enough space for a day-in-the-rocks luggage.



Fabric: Midora



## DIX

**COLORS** ● ● bijou blue, neon yellow

Chalk bag made of colorful fabrics with transfer print decoration.



Fabric: Midora



## HEALLY

**SIZE** 200 x 120 x 10 cm  
**COLORS** ● ● bijou blue, neon yellow

Foldable, thick bouldering pad protecting from injuries during unexpected fall offs from rocks. Equipped with velcros, transport handles and backpack carrying straps.

Fabric: Midora

## ULLA

**SIZE** 130cm x 130cm  
**COLORS** ● black

Simple, almost 2 square meters big rope sheet made of impregnated fabric. Helps to carry and protect Your rope.

Fabric: 100% Polyester







**GHARB**

**SIZE**

**COLORS** ● ●

Comfortable and functional mountaineering backpack for few day mountain trips.

- adjustable and detachable lid
- 4 side compression straps
- front zip for easy backpack access
- 2 trekking pole attachment loops
- 2 ice axe attachment points
- small zipped inner pocket
- mesh hip belt for better ventilation
- additional mesh pocket on hip belt
- removable aluminum frame

65 liters,  
neon yellow,  
bijou blue



Fabric: MIDORA  
PRO



**SAFI**

**SIZE**

**COLORS** ● ●

Advanced, technical backpack for all climbing use with ergonomic carrying system.

- 1 big compartment;
  - 1 lid pocket, 1 front pocket;
  - trekking poles and ice axe attachments points;
  - 2 mesh pockets;
  - adjustable chest strap and waist belt;
  - long compression straps for a karrimat;
  - hydration system compatible;
  - integrated raincover.
- Carrying system: flexible preformed pad (P-formula)

45 liters,  
neon yellow,  
bijou blue



Fabric: MIDORA  
PRO



# BACKPACKS



## NAXXA

**SIZE**  
**COLORS** ● ●

30 liters,  
neon yellow,  
bijou blue

Climbing backpack for weekends spent on trails. Integrated raincover protects from humidity.

- trekking poles and ice axe attachments points;
  - 2 mesh pockets;
  - adjustable chest strap and waist belt;
  - long compression strap (karrimat) hydration system compatible;
  - integrated raincover.
- Carrying system: flexible preformed pad (P-formula)



Fabric: MIDORA PRO

36



## KOOX

**SIZE**  
**COLORS** ● ●

40 liters,  
neon yellow,  
bijou blue

Big rope bag with integrated rope sheet and inner organizer for climbing gear.

- 1 main compartment for rope and gear;
  - 1 zipped inner pocket;
  - carrying handles;
  - 2 big mesh pockets;
  - integrated rope sheet;
  - inner loops for climbing gear
  - full length front zip;
  - simple carrying system.
- Carrying system: fully padded back



Fabric: MIDORA PRO



## GUDYA

**SIZE**  
**COLORS** ● ●

25 liters,  
neon yellow,  
bijou blue

Compact and comfortable backpack for one day trips in the mountains.

- 1 compartment;
- 1 spacious front pocket;
- zipped inner pocket;
- trekking poles and ice axe attachments points;
- 2 mesh pockets;
- adjustable chest strap and waist belt;
- long compression straps for a karrimat;
- hydration system compatible.
- carrying system: adaptable perforated foam



Fabric: MIDORA PRO



## AZZY

**SIZE**  
**COLORS** ● ●

20 liters,  
neon yellow,  
bijou blue

Smart daypack with comfortable carrying system and features enabling short trekking

- 1 compartment;
- 1 spacious front pocket;
- trekking poles attachments points;
- 2 mesh pockets;
- adjustable chest strap;
- simple waist belt;
- reflective piping;
- hydration system compatible.
- Carrying system: EVA pads with air tunnel (T-formula)



Fabric: MIDORA PRO





## VIANG

**SIZE**  
**COLORS** ● ●

Light, flexible backpack with adjustable volume thanks to roll-up closure with 2 side buckles and additional side compression straps.

• 1 compartment  
• separate hydration pocket  
• roll-up closure  
• compression straps  
• 2 mesh pockets  
• 1 front pocket  
• performance carrying straps  
• hip belt with a pocket  
Carrying system: EVA pads with air tunnel (T-formula)



Fabric: MIDORA PRO

24 liters,  
neon yellow,  
bijou blue

## ENTU

**SIZE**  
**COLORS** ● ●

Smart daypack with comfortable carrying system and features enabling short trekking use

• 1 compartment; • 1 spacious front pocket; • trekking poles attachments points; • 2 mesh pockets; • adjustable chest strap; • simple waist belt; • reflective piping; • hydration system compatible. • carrying system: EVA pads with air tunnel (T-formula)



Fabric: MIDORA PRO

20 liters,  
neon yellow,  
bijou blue



## KYRKO

**SIZE**  
**COLORS** ● ●

Small hydration pack with a compartment for the most important items during running or cycling trainings.

• 1 main compartment; • separate hydration pocket; • 1 front pocket; • trekking poles attachment points; • adjustable chest strap; • simple waist belt; • reflective piping; • hydration system compatible • carrying system: EVA pads with air tunnel (T-formula)



Fabric: MIDORA PRO

12 liters,  
neon yellow,  
bijou blue



## AKRA

**COLORS** ● ●

bijou blue,  
neon yellow

Handy shoulder bag which fits a standard ipad. Features 2 front pockets for mobile phone and wallet, spacious, padded main compartment with numerous pockets and a adjustable shoulder strap.



## SAWLA

**COLORS** ● ●


bijou blue,  
neon yellow

Small shoulder bag with enough space to carry the most important everyday necessities. With adjustable belt to wear comfortably across the chest.





## MEYO

**SIZE** 10X20X7cm  
**COLORS**   bijou blue, neon yellow

Small and simple hip bag with 2 zipped pockets to carry along the most important items.



## OCUS

**SIZE** 15x11x5cm  
**COLORS**   bijou blue, neon yellow

Small shoulder bag with belt loop, handle and extra front pocket. Fits easily a wallet and a compact camera.



## MONGO

**SIZE** 18x14cm  
**COLORS**   bijou blue, neon yellow

Flat neck wallet for documents and valuables. Can be attached to belt if needed.



## NOTTY

**SIZE** 10X20X6cm  
**COLORS**   bijou blue, neon yellow

Smart hip bag designed for runners. It can be compressed to a compact size or left open with a bottle holder right in the middle.



## INGU

**SIZE** 20X27X10cm  
**COLORS**   bijou blue, neon yellow

Wash case with inner hook, mesh pockets and carrying handle.



## WALLY

**SIZE** 14x11cm  
**COLORS**   bijou blue, neon yellow

Small wallet with climbing design and numerous pockets available in 2 colours.







## JAZA

### SIZES

M (38-41),  
L (42-44),  
XL (45-47)

Ski touring socks with thick and warm weave for comfort in low temperatures.

- no pressure double welt;
- AirControl System for optimized ventilation of your feet;
- flatlock seams minimize skin abrasions;
- Y heel construction for perfect fit.

Fabric: 84% Merino Wool, 13% Prolen Siltex, 3% Lycra



## AMEDI

### SIZES

M (38-41),  
L (42-44),  
XL (45-47)

Lightest Merino Wool socks for spring and summer trekking.

- no pressure double welt;
- AirControl System for optimized ventilation of your feet;
- flatlock seams minimize skin abrasions;
- Y heel construction for perfect fit.

Fabric: 84% Merino Wool, 13% Prolen Siltex, 3% Lycra



## KALAR

### SIZES

M (38-41),  
L (42-44),  
XL (45-47)

For winter trekking – thick weave for warm feeling.

- no pressure double welt;
- AirControl System for optimized ventilation of your feet;
- flatlock seams minimize skin abrasions;
- Y heel construction for perfect fit.

Fabric: 84% Merino Wool, 13% Prolen Siltex, 3% Lycra



## LEVAN

### SIZES

M (38-41),  
L (42-44),  
XL (45-47)

Running socks of medium height for intensive activities in summer temperatures.

- no pressure double welt;
- AirControl System for optimized ventilation of your feet;
- flatlock seams minimize skin abrasions;
- Y heel construction for perfect fit.

Fabric: 85% Coolmax, 12% Polyamide, 3% Lycra





## TAAY

**COLORS** ● ●

blue nights,  
tomato red

Bright warmth for everyone available  
in 2 colors.

Fabric: 100% Acrylic



## BALACLAVA

**COLORS** ●

black textured

Basic balaclava for cold and windy  
conditions.

Fabric: Pontetorto  
Stretch



## BATURA

**COLORS** ●

black textured

Closely cut technical glove for intensive  
winter sport activities.

Fabric: Softshell 2  
Insulation: Thinsulate



## BAYU

**COLORS** ●

black textured

Insulated mitten which provides  
comfort and thermal protection in  
coldest conditions.

Fabric: Aquatex 2  
Insulation: Primaloft Sport 100



## TAPI

**COLORS** dark green, burgundy, brown  
amparo blue, ocean blue, grey

Warm, high and avant-garde with  
pom-pom.

Fabric: 100% Acrylic



## DOBE

**COLORS** ●

black

Technical, close fitted hat.  
Can be worn under a helmet.

Fabric: Nanoqpile  
WP + 1



## KOJI

**COLORS** ●

black

Insulated glove with excellent thermal  
protection for tough conditions.

Fabric: Aquatex 2  
Insulation: Primaloft Sport 100



## YERU

**COLORS** ●

black

Fabric: Polartec 200 Classic

Fabric: Nanoqpile  
WP + 1





## BIVOUAC ACCESSORIES

### RESTO

**SIZE** 183X51X2,5cm  
**WEIGHT** 800g  
**COLORS** ● ● grey, navy

Self inflating mattress with a solid foam core for a comfortable sleep in trekking conditions. Provides insulation from the ground and takes small luggage space.

- solid foam core • anti slip bottom
- compact size • additional bag and repair kit

### RESTO PRO

**SIZE** 183X51X2,5cm  
**WEIGHT** 650g  
**COLORS** ● ● brick, red

Ultra light, durable and keeps the comfort at a respectable level thank to advanced construction of the core.

- ultra light form core • anti slip bottom
- additional bag and repair kit

### ARGO

**SIZE** 66x18cm  
**COLOR** ● black

Water-proof cover for a karrimat with a cord closure and handle at the bottom.

- Key features:*
- universal size;
  - durable fabric; • easy string closure; • carrying handle.

### NAMIB

**SIZE** 195,185  
**WEIGHT** 850g  
**COLOR** ● ● amparo blue, periscope grey  
 left, right

#### ZIPS

Light and warm sleeping bag filled with the best possible down alternative, Primaloft Sport. It ensures thermal comfort independent from the humidity conditions.

- outer fabric—Gelanots;
- Primaloft Sport 100 filling;
- zip with insulated flap;
- inner pocket.

### BIVY BAG

**SIZE** 75 cm (top),50 cm (bottom)  
**WEIGHT** 350g  
**COLOR** ● black

Fully taped, waterproof bivouac sack.

- Aquatex membrane;
- all seams taped, zips covered;
- lightweight and space-saving thank to supplied carrying bag;
- size and shape specific for Milo sleeping bags.





## CEVE

### SIZE

20x40cm

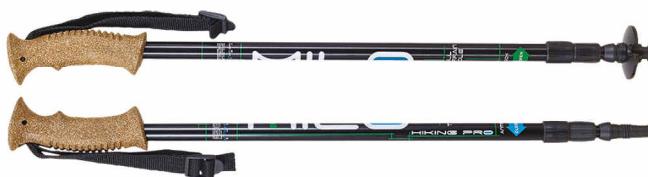
### COLORS



grey

Durable cover for a pair of crampons made of Midora fabric. The lining prevents from damage, rubber band closure enables easier packing.

Fabric: Aquatex  
MIDORA



## CRUISE TT

### WEIGHT GRIP

670g

ergonomic, cork

Basic 3-sections 6061 alloy trekking poles with antishock system, comfortable and durable grip for long walks or trekkings, easily adjustable length of maximum 135 cm and a pair of basic baskets. Compact size and weight are the assets of the reasonably priced, yet good quality set of poles.



## UGO

### COLORS



black

Gaiters combining the benefits of light waterproof membrane upper part with a robust lower part. Full length front zip closure and hypalon fastening straps.

Fabric: Aquatex  
MIDORA



## CRUISE GT

### WEIGHT GRIP

570g

ergonomic, EVA

All-round 3-section trekking poles made of lightweight 7071 alloy. EVA handle along with 20 cm EVA tube provide multiple grip possibilities and 2 pairs of baskets help in difficult terrain conditions. Reliable Clip Lock length adjusting system helps to set the perfect position of the 135 cm long pole.



## CREEK

### COLORS



grey/black, red/  
black, black

Heavy duty gaiters available with easy front zip closure. Equipped with durable Hypalon fastening straps and adjustable top circumference.

Fabric: MIDORA



## CRUISE FR

### WEIGHT GRIP

550g

extended, EVA

2 sections-poles made of 7001 alloy, designed for ski touring and freeriding. Ergonomic EVA grip plus 30 cm long EVA tube on the top section provide flexibility in demanding slope conditions. Equipped with regular and powder snow baskets. The maximum length of 140 cm is adjustable with stable Clip Lock system.



## WALKER

### COLORS



grey, black

Basic snow gaiters for tough conditions. Equipped with Hypalon fastening straps and easy rear closure with a velcro and snap buttons.

Fabric: MIDORA





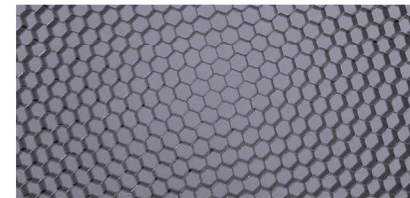
## MEMBRANE

Gelanots® – this membrane manufactured in Japan quickly gained confidence of the newest generation fabrics' enthusiasts all over the world. We are using this fabric in several versions, including: • 3-layer Ultralight (3U, 77g/m<sup>2</sup>), enormously breathable (56000g/m<sup>2</sup>/24h) and waterproof (20.000mm/H<sub>2</sub>O), where the outer ripstop layer is combined with breathable and waterproof membrane protected by knitwear; • 3-layer Stretch (3S, 100g/m<sup>2</sup>), with very similar parameters to 3U version, but with an addition of elastic yarn; • 3-layer (3L, 100g/m<sup>2</sup>) with excellent waterproof performance up to 20.000mm/ H<sub>2</sub>O and breathability up to 20.000g/m<sup>2</sup>/24h. As a result, products made of Gelanots provide an efficient moisture transport away from the body avoiding process of condensation. Moreover, Gelanots laminates are not microporous so they retain their windproof, waterproof and breathable qualities for a long time of use. AQUATEX™ – these fabrics comprise a group of different materials covered with a layer of microporous polyurethane. This layer manages to achieve two opposing characteristics. Because particles of water are bigger than the micropores in polyurethane, Aquatex is waterproof and windproof. On the other hand, the molecules of vapour produced by a body during physical exertion are much smaller than the polyurethane micropores, so perspiration can permeate through the outer layer of material where it evaporates into the air. This effect is known as breathability, maintaining a natural microclimate near the skin and reducing the sensation of overheating and discomfort due to moisture remaining between outer clothes and body. SOFTSHELL 3 – waterproof and highly breathable softshell fabric, made of 3 layers. The outer 4-way stretch layer offers durability and movement. The middle layer is Aquatex™ and offers a waterproof, breathable membrane for optimum performance. The inner layer is a soft but durable fleece which acts as both insulation and a moisture transportation layer to quickly wick away perspiration. SOFTSHELL 2 – 2-layer fabric constructed of 4-way stretch outer layer bonded to a fleece inner layer. It offers maximum freedom of movement combined with warmth, softness and wind protection. 2HL version is additionally finished with a warmer High Loft fleece layer for improved thermal protection



## INSULATION

PRIMALOFT® SPORT – the perfect combination of high performance insulation and value. This technology combines ultra-fine and multi-diameter fibers for specific performance characteristics. The specially treated ultrafine fibers help to form a water resistant insulating structure, while the multidiameter fibers help to build loft. Primaloft® is currently one of the best alternatives to down. Fiber created for NASA. POLARTEC® is a trade mark and registered in United States and in other jurisdictions for fabrics available only from Polartec Inc. "Times" magazine hailed Polartec® products one of the greatest inventions of the 20th century. Polartec® Thermal Pro® Recycled – a group of knitted fabrics made of polyester fibers with excellent isothermal properties. The Thermal Pro® range offers unique insulation properties while moving the moisture away from the body. Very soft and breathable, they are rugged, do not change their outer appearance and are resistant to pilling. POLARTEC® 200 CLASSIC – universal, classic fleece in 200 weight developed by Polartec®. Very warm, highly breathable, non-pilling and quick drying. Polartec® 100 Micro – these fabrics are the standard for lightweight warmth and breathability. These non-pilling fabrics maintain their insulation ability even after repeated cleaning and keep you warm and comfortable in a wide range of conditions. NANOQPILE 2 – middle weight polar fleece with excellent thermal features. Efficient moisture transportation, quick drying and unique structure of polyester microfibrils provides better breathability. 2B version features additional bamboo fiber finishing. NANOQPILE 1 – light and very stretchable fabric that combines features of first or second layer wear. Provides decent thermal properties and very good breathability. NANOQPILE WP – durable and light fabric with great windproof properties. Its thermal protection feature causes that NanoqPile WP is used in production of active sportswear



## TECHINCAL

EXTENDO – 4-way stretch fabric with a robust outer side and moisture regulating inner surface. Made from polyester and spandex fibers (93%/7%). Extendo dries rapidly, is highly elastic, retains its shape and is light and breathable making it a first choice for all active travellers, trekkers and climbers. Other versions: • Extendo ST: heavier and thicker version of Extendo. Increased content of spandex fibers to 8% made Extendo ST more flexible. Used for production of highly technical garments for intense usage like ski touring; • EXTENDO WT: a development of Extendo fabric with warmer inner finishing, prepared for colder seasons; • Extendo CL: lightweight version of Extendo. Designed specially for climbing pants. SUPPLEX® – fabric manufactured by Invista company that combines softness and grip of cotton and all best properties of nylon. It is resistant to tearing and abrasion as well as breathable. Thanks to thin Nylon fibres used for manufacturing it is up to 30 % softer than standard polyamide fabrics. ECLIPSE – lightweight, pill resistant, polyester knit fabric with superior moisture management, which wicks moisture away from the body to the next layer of the clothing system. Eclipse has a soft feel, dries rapidly, and keeps its shape well.

Milo-Sport reserves the right to modify any of the products presented in this catalogue, if considers it appropriate. Please note that because of the limitations of the printing process, the colors of the products shown in this catalogue do not always match the real shades of fabrics used. Should any doubts arise, please consult with Milo-Sport. All products presented in the catalogue have the benefit of our 2 year warranty for workmanship and fabrics. Care should be taken while maintaining our products and the special, written instructions for use provided with each product should be followed. Warranty conditions: Milo-Sport products identified with our warranty label have a 24 month warranty for all design and fabric defects and for workmanship, which shall be to the standards set by the company. Repairs undertaken under warranty do not extend the warranty period. The warranty does not cover mechanical damages caused by the use or wear of elements and damages resultant from non-conformity to the instructions for use. Your statutory rights are unaffected





MILO Sport s.j.  
ul. Łączna 39  
41-303 Dąbrowa Górnicza  
Poland  
tel/fax: +48 32 261 82 83  
tel: +48 32 264 11 38  
tel: +48 32 264 11 34  
info@milo.pl  
www.milo.pl

YOU CAN FIND US:

BULGARIA  
BELGIUM  
CHILE  
CROATIA  
COLOMBIA  
CZECH REPUBLIC  
DENMARK  
FRANCE  
GERMANY  
GREECE  
HUNGARY  
ISRAEL  
ITALY  
JAPAN  
JORDAN  
LATVIA  
MALAYSIA  
POLAND  
PORTUGAL  
ROMANIA  
RUSSIA  
SERBIA  
SLOVAKIA  
SLOVENIA  
SPAIN  
SWEDEN  
TURKEY  
TAIWAN  
UKRAINE